

REFER TO SHEET 4 FOR CONTINUATION

FPLC18
DNO-N

FPLC19
DNO-N

1
DNO-N

LIGHTING DESIGN UNDERTAKEN BY OCC ON BEHALF OF BWB / CLOWES. FURTHER COORDINATION BETWEEN OCC AND DESIGNER WILL BE REQUIRED AT A LATER STAGE TO ENSURE COMPLIANCE THROUGHOUT ALL SECTIONS OF SCIENCE BRIDGE.

SCHEME EXTENTS

3
DNO-N

2
DNO-N

4
DNO-N

5
DNO-N

6
DNO-N

7
DNO-N

REFER TO SHEET 6 FOR CONTINUATION

0 25 50
1:1000

© Crown Copyright [and database rights Oxfordshire County Council] [2022] OS [0100023343]. You are permitted to use this data solely to enable you to respond to, or interact with, the organisation that provided you with the data. You are not permitted to copy, sub-licence, distribute or sell any of this data to third parties in any form.

LEGEND

Ⓐ

Supply and install new DW Windsor Kirium Pro 2 luminaire side entry mounted on new 10m Valmont Stainton Avon conical tapered steel lighting column (to OCC specification, see HSD 1300-021). Transfer all attachments from adjacent removed lighting column (if applicable). Terminate cables in new isolator in base of column.
MOUNTING: 0.75m with 5° uplift side entry bracket, lantern to be installed at -5°
LED OUTPUT: CLO, 950mA, 160W, 20.54klm
OPTIC: 64LED 3k C3
DIMMING: 100%, 75% 00:00 to 06:00
SWITCHING: 7-pin NEMA socket with Westire 7200 series 35/18 Photocell

Ⓑ

Supply and install new DW Windsor Kirium Pro 2 luminaire side entry mounted on new 10m Valmont Stainton Avon conical tapered steel lighting column (to OCC specification, see HSD 1300-021). Transfer all attachments from adjacent removed lighting column (if applicable). Terminate cables in new isolator in base of column.
MOUNTING: 0.75m with 5° uplift side entry bracket, lantern to be installed at -5°
LED OUTPUT: CLO, 500mA, 64W, 9.64klm
OPTIC: 48LED 3k D3
DIMMING: 100%, 75% 00:00 to 06:00
SWITCHING: 7-pin NEMA socket with Westire 7200 series 35/18 Photocell

Ⓒ

Supply and install new DW Windsor Kirium Pro Mini luminaire post top mounted on new 5m Abacus Raise & Lowering spring counterbalance column (to OCC specification, see HSD 1300-007). Transfer all attachments from adjacent removed lighting column (if applicable). Terminate cables in new isolator in base of column.
MOUNTING: Post Top Mounted
LED OUTPUT: CLO, 550mA, 25W, 3.56klm
16LED 3k A2
OPTIC: 100%, 75% 00:00 to 06:00
DIMMING: 7-pin NEMA socket with Westire 7200 series 35/18 Photocell
SWITCHING:

00
DNO-N

Proposed Column/Sign Identifier
Proposed Electrical Supply Type

SUPPLY TYPE
DNO: Distributor Network Operator
PCN: Private Connection Network

DNO-[N] / [D] / [T] / [R]: DNO new service / disconnection / transfer / remain.
PCN-[N] / [D] / [T] / [R]: PCN new service / disconnection / transfer / remain.

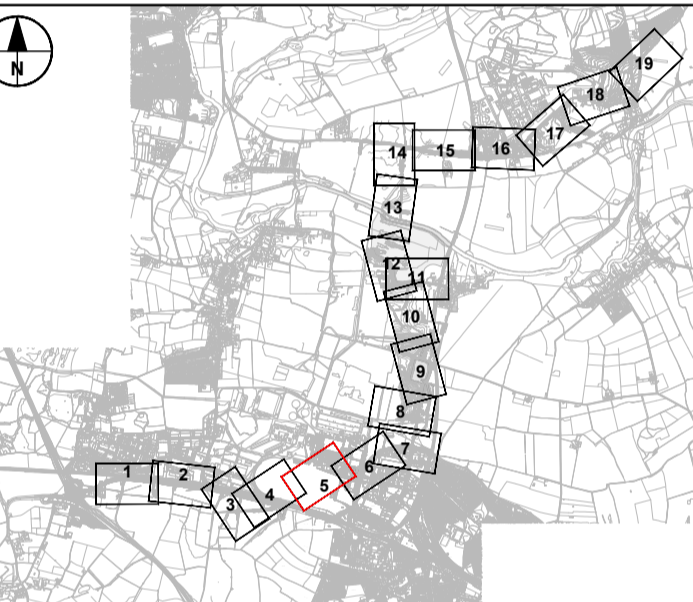
Position of Proposed Lighting Columns designed by Oxford County Council

IT IS ASSUMED THAT ALL WORKS ON THIS DRAWING WILL BE CARRIED OUT BY A COMPETENT CONTRACTOR WORKING, WHERE APPROPRIATE, TO AN APPROPRIATE METHOD STATEMENT.

THIS DRAWING IS TO BE USED ONLY FOR THE PURPOSE OF ISSUE THAT IT WAS ISSUED FOR.

NOTES:

- ALL DIMENSIONS ARE IN METRES UNLESS OTHERWISE STATED.
- THE INFORMATION ON THIS PLAN IS GIVEN WITHOUT OBLIGATION OR WARRANTY. NO LIABILITY OF ANY KIND WHATSOEVER IS ACCEPTED BY AECOM FOR ANY ERRORS OR OMISSIONS.
- DRAWING IS BASED ON ORDNANCE SURVEY MAPPING AND TOPOGRAPHICAL SURVEY SUPPLIED BY PLOWMAN CRAVEN (DATED MAY 2020).
- ITEMS IN GREY (APART FROM SOLID HATCHING) REPRESENT EXISTING INFRASTRUCTURE AND ARE TO REMAIN UNLESS STATED OTHERWISE.
- NEW FOOTWAY AND CARRIAGEWAY INSPECTION CHAMBER COVERS LINKED TO STATUTORY UNDERTAKERS APPARATUS ARE NOT SHOWN ON THIS DRAWING REVISION.
- CURRENT TOPOGRAPHICAL SURVEY DOES NOT COVER THE EXTENTS OF THE PROPOSED APPLEFORD SHUTTLE ARRANGEMENT. THIS SECTION IS BASED ON THE ORDNANCE SURVEY MAPPING AND AERIAL PHOTOGRAPHY.
- EXISTING LIGHTING EQUIPMENT HAS BEEN SHOWN ON THIS DRAWING WITHIN THE SCHEME EXTENTS ONLY.



FIRST ISSUE	AC JL	19/08/21	P01
SECOND ISSUE	AZ AGB	16/06/22	P02
REVISION DETAILS	By Check	Date	Suffix

Purpose of issue
SUITABLE FOR INFORMATION

Client
OXFORDSHIRE COUNTY COUNCIL

Project Title
DIDCOT GARDEN TOWN HOUSING INFRASTRUCTURE FUND (HIF 1)

Drawing Title
DIDCOT SCIENCE BRIDGE SCHEME WIDE LIGHTING LAYOUT SHEET 5 OF 19

Designed AZ	Drawn AZ	Checked KC	Approved AGB	Date 27/06/23
Internal Project No. 60632497		Suitability S2		
Scale @ A1 1:1000		Discipline Town & Country Planner		

THIS DOCUMENT HAS BEEN PREPARED PURSUANT TO AND SUBJECT TO THE TERMS OF AECOM'S APPOINTMENT BY ITS CLIENT. AECOM ACCEPTS NO LIABILITY FOR ANY USE OF THIS DOCUMENT OTHER THAN BY ITS ORIGINAL CLIENT OR FOLLOWING AECOM'S EXPRESS AGREEMENT TO SUCH USE, AND ONLY FOR THE PURPOSES FOR WHICH IT WAS PREPARED AND PROVIDED.

AECOM
63-77 Victoria Street
St Albans
Herts
AL1 3ER
Tel: +44 (0) 172 7535 000
www.aecom.com

AECOM
AECOM Infrastructure & Environment UK Limited
Registered in England Registered number: 880328
Registered office: Midpoint, Alencon Link,
Basingstoke, Hampshire RG21 7PP

Drawing Number	Work Package ID	Volume	Type	Number	Rev
GEN_PD-ACM-HLG-DGT_LTG_ZZ-DR-T-1305					P03
Originator		Location	Role		