
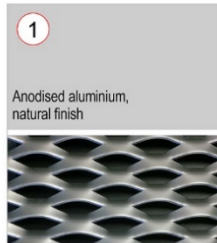


MAIN TERMINAL BUILDING (MTB) & EASTERN TERMINAL EXTENSION (ETE) MATERIAL DETAILS

1



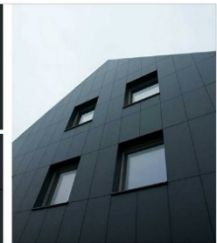
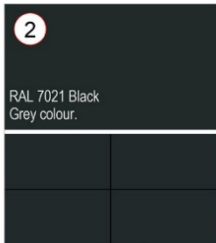
LOCATION: Mesh screen over metal cladding.

SAMPLE/IMAGE OBTAINED FROM: James & Taylor. Loose sample provided.

PRODUCT/DESCRIPTION: Facade screen system; expanded aluminium mesh with trapezoidal eye slits and 15mm gap between panels. Steel face composite panel behind, RAL 7021.

COLOUR/FINISH: Anodised expanded aluminium mesh, natural finish.

2




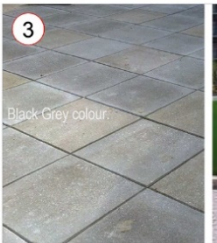
LOCATION: Metal cladding at L00 and L10 external walls.

SAMPLE/IMAGE OBTAINED FROM: Booth Muir. Loose sample provided.

PRODUCT/DESCRIPTION: Facade panel system; aluminium metal panels with recessed joints.

COLOUR/FINISH: RAL 7021 Black Grey colour.

3





LOCATION: R30 roof.

SAMPLE/IMAGE OBTAINED FROM: Bauder Limited. Sample not provided.

PRODUCT/DESCRIPTION: Inverted roof; loosely laid insulation boards over waterproof membrane and concrete pavers over.

COLOUR/FINISH: Concrete pavers.

4




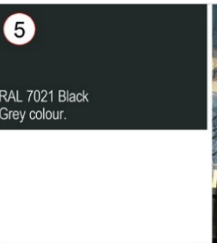
LOCATION: Window glazing.

SAMPLE/IMAGE OBTAINED FROM: Saint Gobain. Sample not provided.

PRODUCT/DESCRIPTION: Double glazing with 16mm air-filled cavity, 8mm outer Saint Gobain Planiclear glass, 10.8 mm inner Saint Gobain Planiclear glass.

COLOUR/FINISH: Clear glass (SGG Planiclear).

5




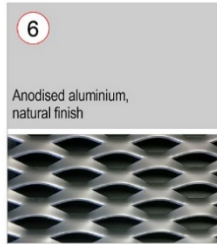
LOCATION: In all facade glazing elements.

SAMPLE/IMAGE OBTAINED FROM: Schueco. Sample not provided.

PRODUCT/DESCRIPTION: Aluminium curtain wall with vertical silicone joint (profile TBC).

COLOUR/FINISH: External framing in polyester powder coated (PPC) aluminium, RAL 7021, when required at the edges of the windows.

6




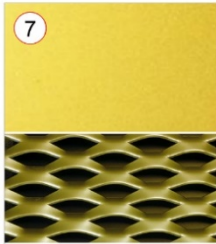
LOCATION: Selected windows

SAMPLE/IMAGE OBTAINED FROM: James & Taylor. Loose sample provided.

PRODUCT/DESCRIPTION: Expanded aluminium mesh panel with trapezoidal eye slits and metal frame

COLOUR/FINISH: Anodised expanded aluminium mesh, natural finish.

7




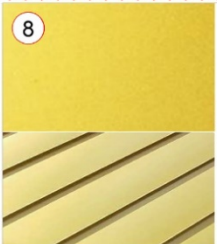
LOCATION: Mesh screen over metal cladding at L00-L20 external walls.

SAMPLE/IMAGE OBTAINED FROM: James & Taylor. Loose sample provided.

PRODUCT/DESCRIPTION: Expanded aluminium mesh panel with trapezoidal eye slits and metal frame.

COLOUR/FINISH: Gold Anodised expanded aluminium mesh.

8





LOCATION: Standing seam cladding on Landside Building.

SAMPLE/IMAGE OBTAINED FROM: eZinc. Loose sample provided.

PRODUCT/DESCRIPTION: Titanium zinc (gold coloured) standing seam cladding with diagonal seam direction.

COLOUR/FINISH: Gold zinc.

9



LOCATION: Light weight roofs, L10, L20 and R30

SAMPLE/IMAGE OBTAINED FROM: Kalzip. Loose sample provided.

PRODUCT/DESCRIPTION: Aluminium standing seam profiled roof.

COLOUR/FINISH: Polyvinylidene fluoride coating (PVDF) aluminium, silver.

Note:
Any reproduction of Ordnance Survey map work illustrated on this drawing is covered by licence (No. SR151585) issued by the Director General, Ordnance Survey and allows PASCALL+WATSON Limited ("The Licensee") to copy Ordnance Survey material for their business use.
The signed control copy of this drawing is held at the offices of PASCALL+WATSON Limited.

- All information shown outside the Proposal Boundary is for illustrative purposes only.

- Internal layouts are for illustrative purposes only.

- Base building survey information by LCY and MSA.



NOTE:
ALL PRODUCTS ILLUSTRATED HERE ACCORD WITH THE ARCHITECTURAL INTENTION. HOWEVER THESE PRODUCTS MAY BE SUBSTITUTED DURING LCY'S PROCUREMENT PROCESS AND WILL BE REQUIRED TO RETAIN SUFFICIENT VISUAL AND MATERIAL SIMILARITY TO THE ARCHITECTURAL INTENT.

B	AB	31/01/18	PCC34: For Planning Approval
A	AB	06/10/17	PCC34: For Planning Approval
Rev	Dim	Date	Description

Planning



Client
LONDON CITY AIRPORT

Project Name
CITY AIRPORT DEVELOPMENT PROGRAMME

Title
CASP
Pre-Commencement
Condition 34:
Material Details - Sheet 3

Discipline	Architecture	Purpose of Issue	For Approval
Drawing Originator	Pascall+Watson architects	Originators Job No.	5077

Checked By	SW	Checked date	06/10/2017	Drawn By	AB	Draw Date	06/10/2017
Approved By	MN	Approval Date	06/10/2017	Scale @ A1	1 : 300		

Building Grid Reference

CADP

Proj Code	Orig.	Disc.	Zone	Level	Tie	Type	Subtype	Orig. Series/NO.	Rev.	Status
A400	PAW	A	14	XXXX	XX	DR	DE	213-003	B	S3

Figure 4.0.3: Main Terminal Building and Eastern Terminal Extension Material Details

Note:
Any reproduction of Ordnance Survey map work illustrated on this drawing is covered by Iconco (No. SK101560) issued by the Director General, Ordnance Survey and allows PASCALL+WATSON Limited ("The Licensee") to copy Ordnance Survey material for their business use.
The signed control copy of this drawing is held at the offices of PASCALL+WATSON Limited.

- All information shown outside the Proposal Boundary is for illustrative purposes only.

- Internal layouts are for illustrative purposes only.

- Base building survey information by LCY and MSA

SCALE BAR



NOTE:
ALL PRODUCTS ILLUSTRATED HERE ACCORD WITH THE ARCHITECTURAL INTENTION. HOWEVER THESE PRODUCTS MAY BE SUBSTITUTED DURING LCY'S PROCUREMENT PROCESS AND WILL BE REQUIRED TO RETAIN SUFFICIENT VISUAL AND MATERIAL SIMILARITY TO THE ARCHITECTURAL INTENT.

A	AB	06/10/17	PCC34: For Planning Approval
Rev	Dim	Date	Description

Planning



Client: LONDON CITY AIRPORT

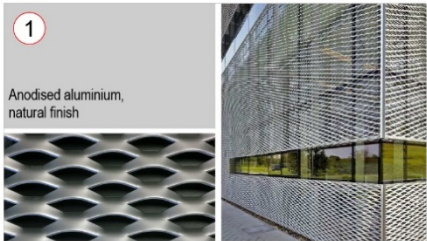
Project Name: CITY AIRPORT DEVELOPMENT PROGRAMME

File: CADP Pre-Commencement Condition 34: Material Details - Sheet 4

Drawn by: Architecture	Checked by: For Approval
Drawn by: PASCALL+WATSON architects	Checked by: 5077
Checked by: SW	Checked Date: 06/10/2017
Approved by: MN	Approved Date: 06/10/2017
Building Unit Reference: CADP	Scale: 1:300
Drawn Date: 06/10/2017	Drawn By: AB
Proj Code: A400PAW	Orig: A
Zone: 14	Zone: XXXXX
Level: DR	Level: DE
Sheet: 213-004	Sheet: A
Rev: S3	Rev: S3



NEW EAST PIER (NEP) MATERIAL DETAILS

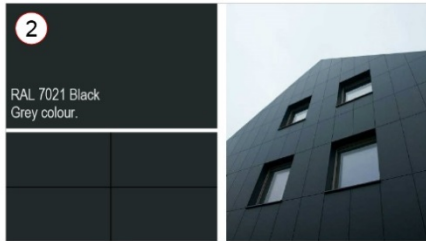


LOCATION: Mesh screen over metal cladding at all levels airside.

SAMPLE/IMAGE OBTAINED FROM: James & Taylor. Loose sample provided.

PRODUCT/DESCRIPTION: Facade screen system; expanded aluminium mesh with trapezoidal eye slits and 15mm gap between panels. Steel face composite panel behind RAL, 7021.

COLOUR/FINISH: Anodised expanded aluminium mesh, natural finish.



LOCATION: Metal cladding at L00 external walls.

SAMPLE/IMAGE OBTAINED FROM: Booth Muir. Loose sample provided.

PRODUCT/DESCRIPTION: Facade panel system; aluminium metal panels with recessed joints.

COLOUR/FINISH: RAL 7021 Black Grey colour.

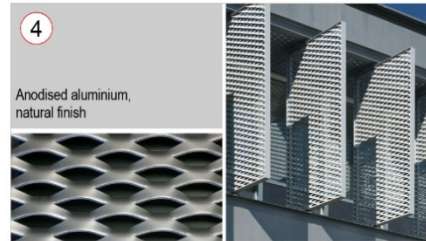


LOCATION: Window glazing.

SAMPLE/IMAGE OBTAINED FROM: Saint Gobain. Sample not provided.

PRODUCT/DESCRIPTION: Double glazing with 16mm air-filled cavity, 8mm outer Saint Gobain Planiclear glass, 10.8 mm inner Saint Gobain Planiclear glass.

COLOUR/FINISH: Clear glass (SGG Planiclear)

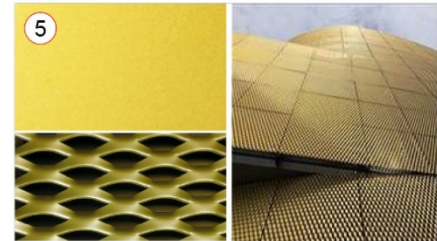


LOCATION: Selected windows

SAMPLE/IMAGE OBTAINED FROM: James & Taylor. Loose sample provided.

PRODUCT/DESCRIPTION: Expanded aluminium mesh panel with trapezoidal eye slits and metal frame.

COLOUR/FINISH: Anodised expanded aluminium mesh, natural finish.



LOCATION: Mesh screen over metal cladding at L00-L20 external walls.

SAMPLE/IMAGE OBTAINED FROM: James & Taylor. Loose sample provided.

PRODUCT/DESCRIPTION: Facade screen system; expanded aluminium mesh with trapezoidal eye slits and 15mm gap between panels.

COLOUR/FINISH: Gold Anodised expanded aluminium mesh.

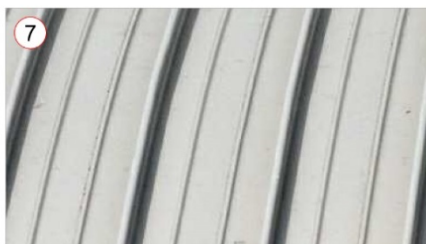


LOCATION: Light weight roofs at R30

SAMPLE/IMAGE OBTAINED FROM: Kalzip. Loose sample not provided.

PRODUCT/DESCRIPTION: Aluminium standing seam profiled roof.

COLOUR/FINISH: Polyvinylidene fluoride coating (PVDF) aluminium, gold coloured.

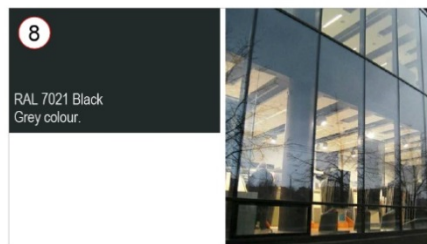


LOCATION: Light weight roofs, L10, L20 and R30

SAMPLE/IMAGE OBTAINED FROM: Kalzip. Loose sample provided.

PRODUCT/DESCRIPTION: Aluminium standing seam profiled roof.

COLOUR/FINISH: Polyvinylidene fluoride coating (PVDF) aluminium, silver.

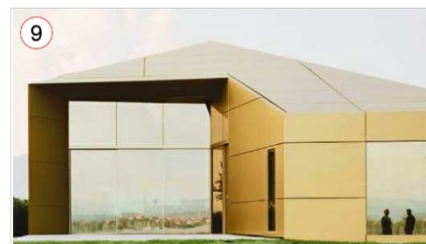


LOCATION: In all facade glazing elements.

SAMPLE/IMAGE OBTAINED FROM: Schueco. Sample not provided.

PRODUCT/DESCRIPTION: Aluminium curtain wall with vertical silicone joint (profile TBC).

COLOUR/FINISH: External framing in polyester powder coated (PPC) aluminium, RAL 7021, when required at the edges of the windows.



LOCATION: End of NEP at L00 and L20

SAMPLE/IMAGE OBTAINED FROM: Alucobond. Loose sample provided.

PRODUCT/DESCRIPTION: Aluminium composite panel cladding system.

COLOUR/FINISH: Regency Gold anodised.



LOCATION: End of NEP at L10

SAMPLE/IMAGE OBTAINED FROM: Alucobond. Loose sample provided.

PRODUCT/DESCRIPTION: Aluminium composite panel cladding system.

COLOUR/FINISH: Natural anodised.

Enter address here

Figure 4.0.4: New Eastern Pier Material Details

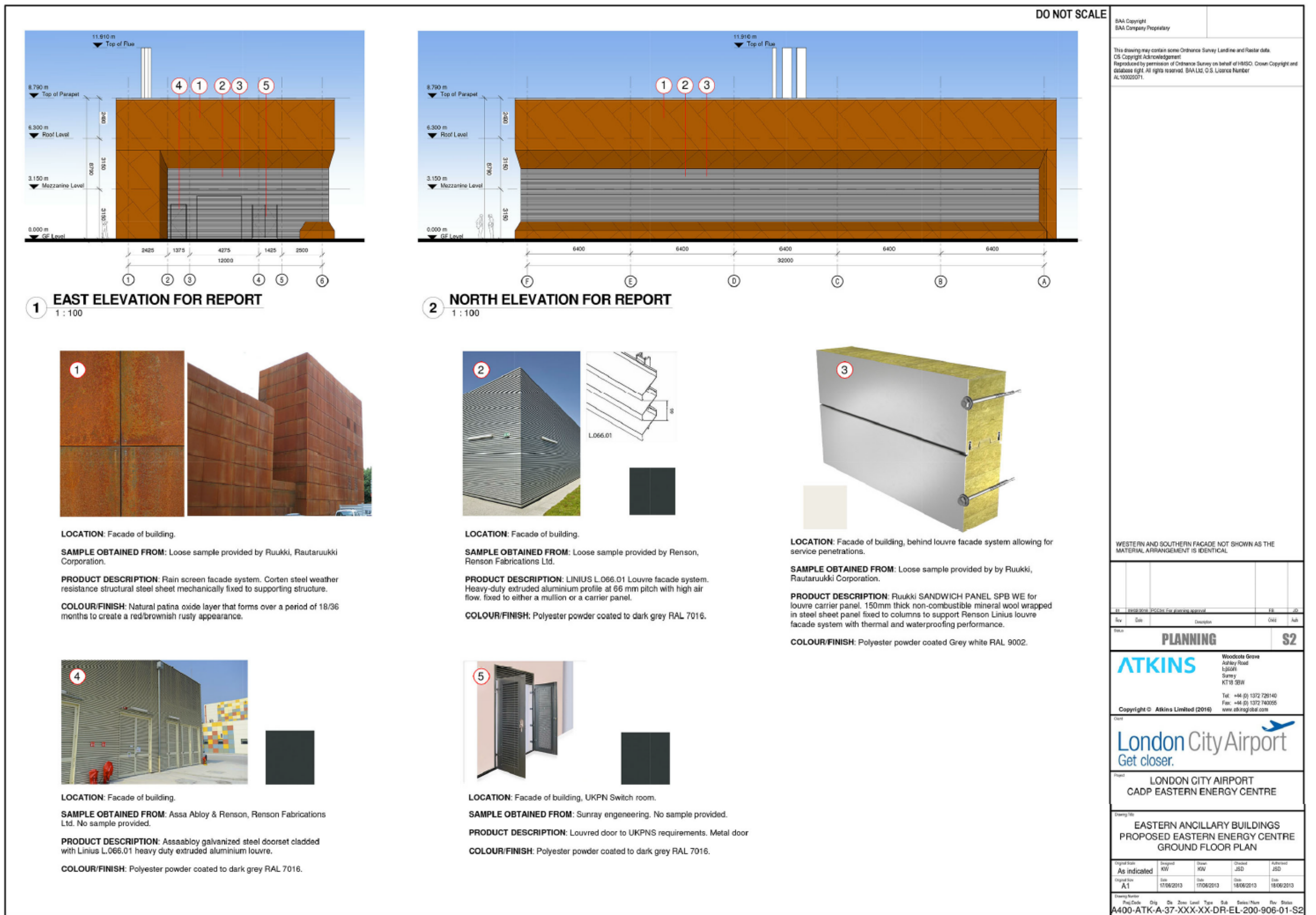


Figure 4.0.5: Eastern Energy Centre Material Details